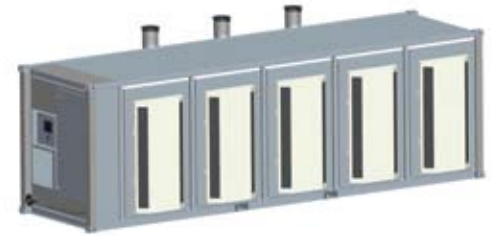


CR600 600 kW Power Package Renewable Fuels



World's largest air-bearing turbine system produces 600kW of clean, green and reliable power.

- High electrical efficiency over a very wide operating range
- Low maintenance air bearings require no lube oil or coolant
- Ultra-low emissions
- High availability – part load redundancy
- Proven technology with tens of millions of operating hours
- Integrated utility synchronization and protection with a modular design
- 5 and 9 year factory protection plans available
- Upgradable to 800 kW and 1 MW with field installed Capstone 200 kW power modules
- Remote monitoring and diagnostic capabilities



CR600 MicroTurbine

Electrical Performance⁽¹⁾

Electrical Power Output	600 kW
Voltage	400 to 480 VAC
Electrical Service	3-Phase, 4 wire
Frequency	50/60 Hz, grid connect operation
Maximum Output Current	870A RMS @ 400V, grid connect operation 720A RMS @ 480V, grid connect operation
Electrical Efficiency LHV	33%

Fuel/Engine Characteristics⁽¹⁾

Digester/Landfill Gas HHV	13.0 to 22.4 MJ/m ³ (350 to 600 BTU/scf) 20.5 to 32.6 MJ/m ³ (550 to 875 BTU/scf)
Inlet Pressure	517-552 kPa gauge (75-80 psig)
Fuel Flow HHV	7,200 MJ/hr (6,840,000 BTU/hr)
Net Heat Rate LHV	10.9 MJ/kWh (10,300 BTU/kWh)
H ₂ S Content	<5,000 ppm

Exhaust Characteristics⁽¹⁾

NOx Emissions @ 15% O ₂ ⁽²⁾	9 ppmvd (18 mg/m ³)
NOx/Electrical Output ⁽²⁾	0.14 g/bhp-hr (0.4 lb/MWhe)
Exhaust Gas Flow	4.0 kg/s (8.8 lbm/s)
Exhaust Gas Temperature	280°C (535°F)
Exhaust Energy	4,260 MJ/hr (4,050,000 BTU/hr)

Reliable power when and where you need it. Clean and simple.

Dimensions & Weight⁽³⁾

Width x Depth x Height	2.4 x 9.1 x 2.9 m (96 x 360 x 114 in)
Weight - Grid Connect Model	11475 kg (25,300 lbs)

Minimum Clearance Requirements⁽⁴⁾

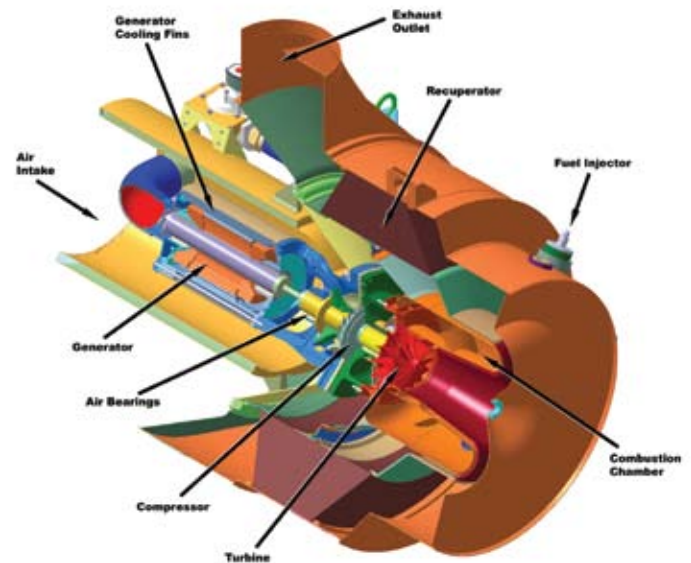
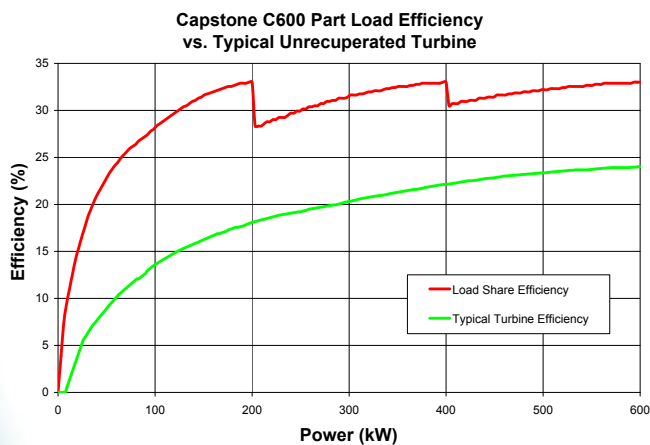
Vertical Clearance	0.6 m (24 in)
Horizontal Clearance	
Left & Right	1.5 m (60 in)
Front	1.5 m (60 in)
Rear	1.8 m (72 in)

Sound Levels

Acoustic Emissions at Full Load Power	
Nominal at 10 m (33 ft)	65 dBA

Planned Certifications

- Will comply with UL 2200 and UL 1741 for raw natural gas and biogas operation under existing UL files⁽⁵⁾
- Will comply with IEEE 1547 and will meet statewide utility interconnection requirements for California Rule 21 and the New York State Public Service Commission
- Models will be available with optional equipment for CE marking



C200 Engine

- (1) Nominal full power performance at ISO conditions: 59°F, 14.696 psia, 60% RH
 - (2) For surrogate landfill and digester gases. Please contact Capstone for additional details
 - (3) Approximate dimensions and weights
 - (4) Clearance requirements may increase due to local code considerations
 - (5) All models are planned to be UL Listed or available with optional equipment for CE marking
- Specifications are not warranted and are subject to change without notice.*

